

# ROYAL FIREWORK

overture

handel

Adagio

Oboe 1

5

10

15

20

25

30

35

40

44

48

tr

tr~

adagio

allegro

4

57



62



67



71



75



79



84



89



94



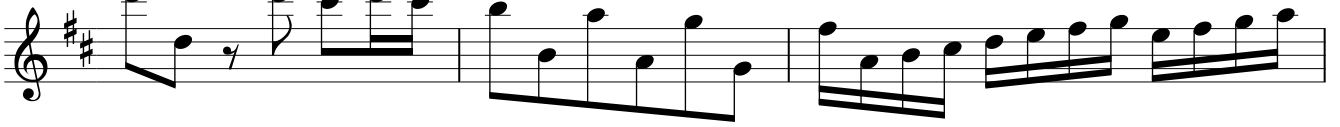
97



100



104



107

109

111

113

116 *Fine*

121

126

131

135

141

147

151

156

160



164



168



172

Lentement.



178



183



*D.S. al Fine*

Detailed description: This page contains six staves of musical notation in treble clef with a key signature of two sharps (F# and C#). The first staff (measures 160-163) features a melodic line with eighth and sixteenth notes. The second staff (measures 164-171) continues the melodic line with similar rhythmic patterns. The third staff (measures 168-171) shows a more rhythmic pattern with eighth notes. The fourth staff (measures 172-177) begins with the tempo marking 'Lentement.' and includes trills (tr) on several notes. The fifth staff (measures 178-182) also features trills. The sixth staff (measures 183-186) concludes with a trill and the instruction 'D.S. al Fine'.

# ROYAL FIREWORK

bourree

Handel

Oboe I

(♩ = 204)

5

9

13

17

21

25

*tr*

*D.C. al Fine*

# ROYALFIREWORK

La paix

Handel

Largo alla Siciliana

Oboe1

3

5

6

7

9

11

13

14

The image shows a musical score for Oboe 1, consisting of 14 measures. The key signature is two sharps (F# and C#), and the time signature is 12/8. The score is written on a single staff. Measures 1-2 contain a melodic phrase with a slur. Measures 3-4 continue the melody. Measures 5-6 feature a descending eighth-note pattern. Measures 7-8 include trills (tr) on the notes G# and C#. Measures 9-10 show a melodic line with a repeat sign at the beginning. Measures 11-12 continue the melody. Measures 13-14 feature trills (tr) on the notes G# and C#.

# ROYALFIREWORK

## La Rejouissance

handel

Allegro

Oboe1

3

6

8

12

15

18

# ROYALFIREWORK

## MENUET I

handel

Oboe1

♩ = 120

6

12

tr.

tr.

tr.

1.

2.

Detailed description: The musical score is written for Oboe 1 in treble clef. It begins with a key signature of one flat (B-flat) and a 3/4 time signature. A tempo marking indicates a quarter note equals 120 beats per minute. The piece consists of 15 measures. Measures 1-5 are a simple eighth-note melody. Measure 6 contains a trill on G4. Measures 7-8 continue the eighth-note melody. Measure 9 features a trill on G4. Measures 10-11 are a simple eighth-note melody. Measure 12 contains a trill on G4. Measures 13-14 are a simple eighth-note melody. Measure 15 is a half note G4, which is the first ending. The second ending is a half note G4. The piece concludes with a double bar line.



# ROYALFIREWORK

## MENUETII

handel

Oboe1

$\bullet = 136$

7

13

*tr*

*tr*

1. 2.

*Fine*